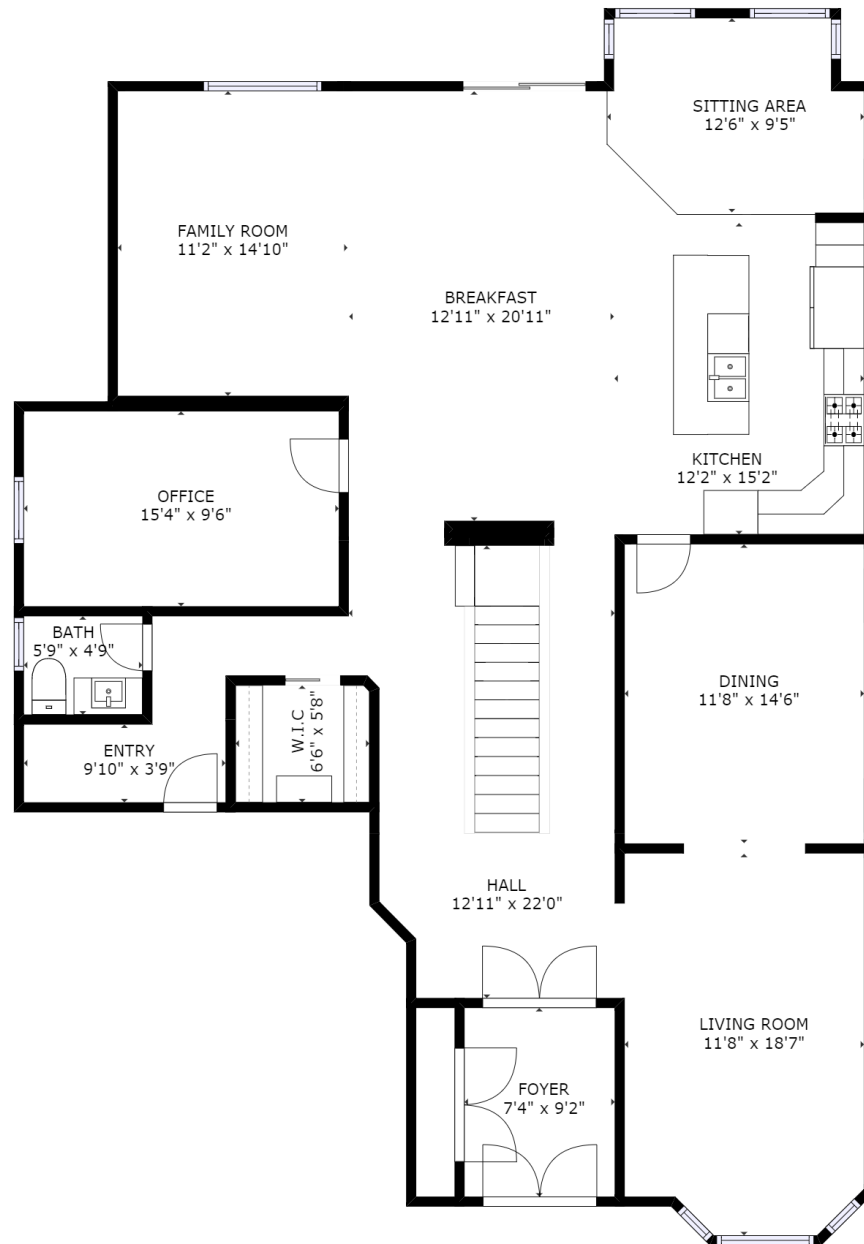


12630 Rue Joron, Pierrefonds

GROSS INTERNAL AREA
 FLOOR 1 : 1834 sq ft, FLOOR 2 : 1821 sq ft
 FLOOR 3 : 2106 sq ft, EXCLUDED AREAS :
 BALCONY: 35 sq ft, GARAGE: 403 sq ft
 REDUCED HEADROOM BELOW 1.5M: 6 sq ft
 TOTAL: 5761 sq ft

SIZES AND DIMENSIONS ARE APPROXIMATE, ACTUAL MAY VARY.

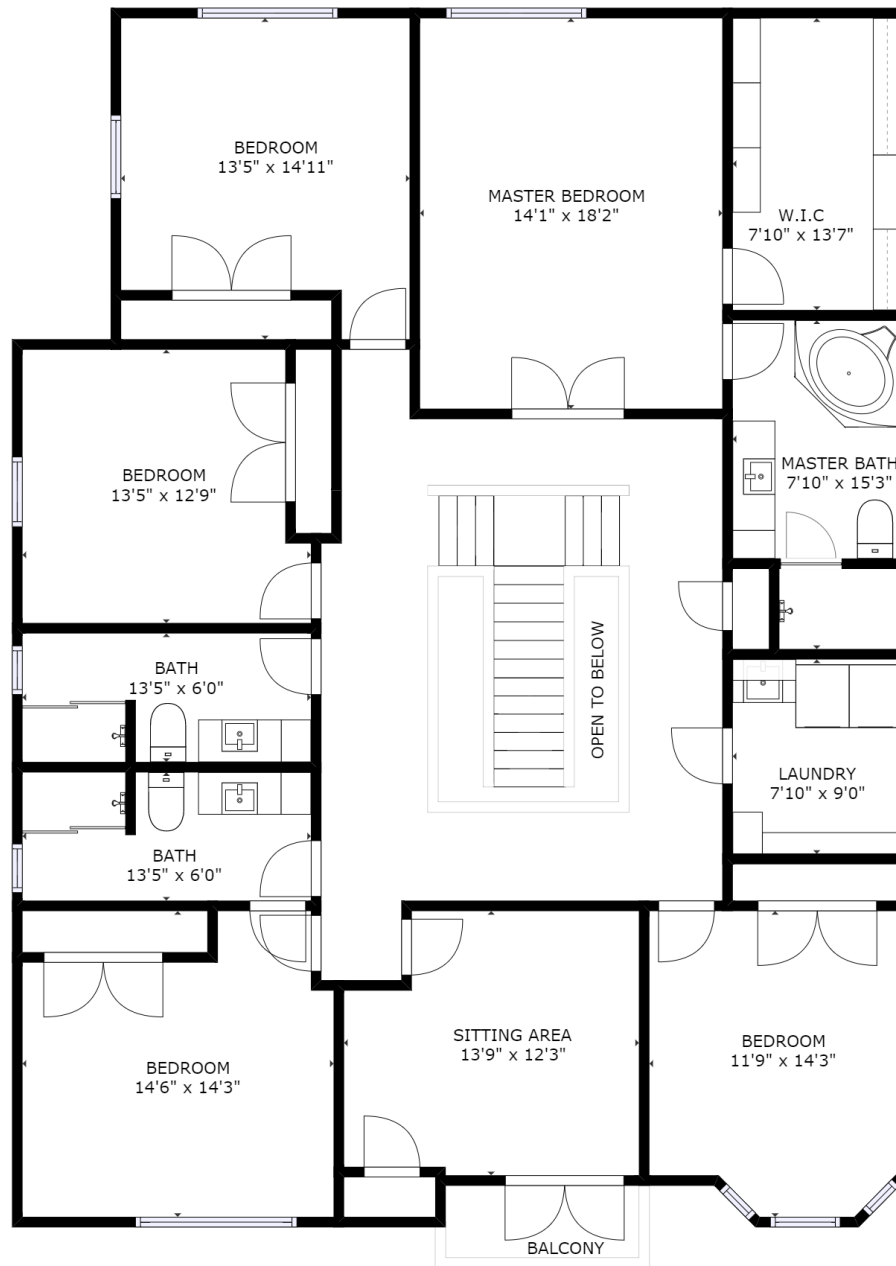


12630 Rue Joron, Pierrefonds

GROSS INTERNAL AREA
 FLOOR 1 : 1834 sq ft, FLOOR 2 : 1821 sq ft
 FLOOR 3 : 2106 sq ft, EXCLUDED AREAS :
 BALCONY: 35 sq ft, GARAGE: 403 sq ft
 REDUCED HEADROOM BELOW 1.5M: 6 sq ft
 TOTAL: 5761 sq ft

SIZES AND DIMENSIONS ARE APPROXIMATE, ACTUAL MAY VARY.





12630 Rue Joron, Pierrefonds

GROSS INTERNAL AREA
 FLOOR 1 : 1834 sq ft, FLOOR 2 : 1821 sq ft
 FLOOR 3 : 2106 sq ft, EXCLUDED AREAS :
 BALCONY: 35 sq ft, GARAGE: 403 sq ft
 REDUCED HEADROOM BELOW 1.5M: 6 sq ft
 TOTAL: 5761 sq ft

SIZES AND DIMENSIONS ARE APPROXIMATE, ACTUAL MAY VARY.